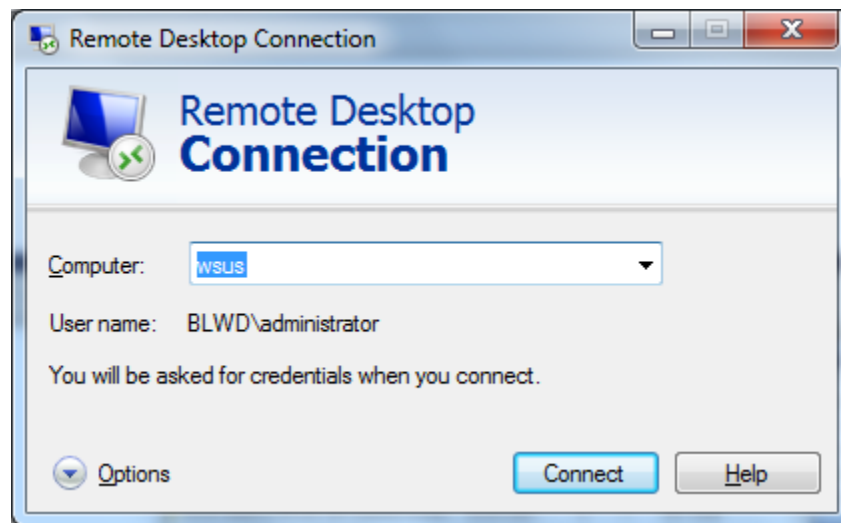


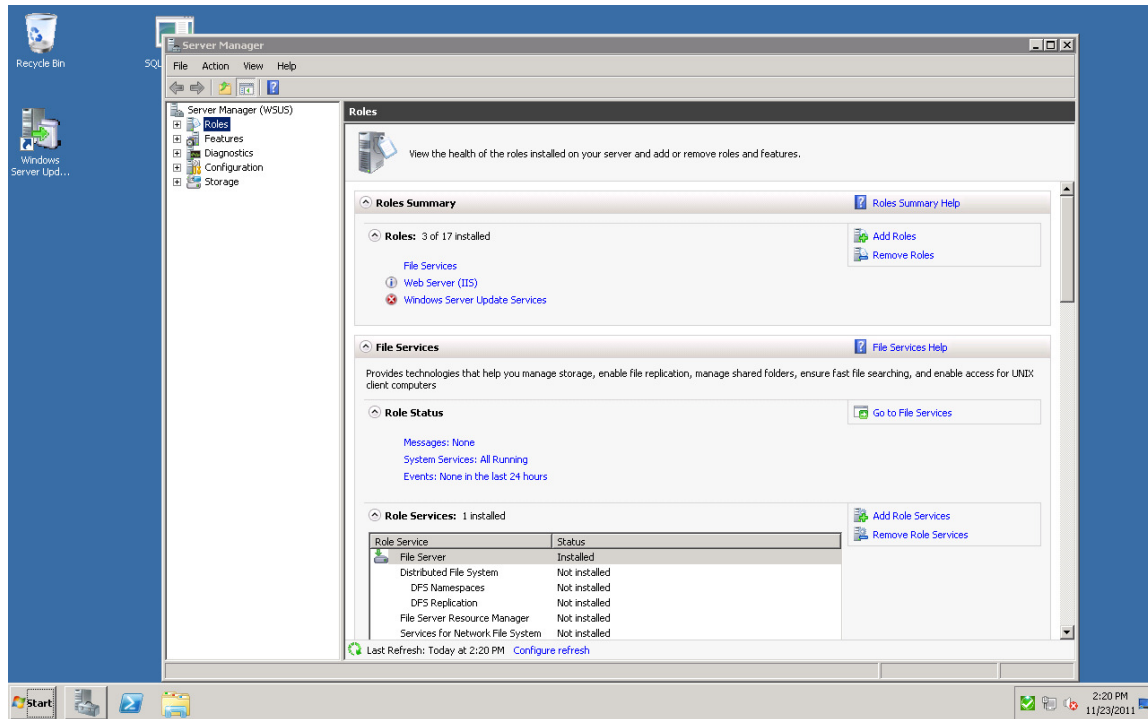
Evidence of Work on the Windows Server Updates Services Server



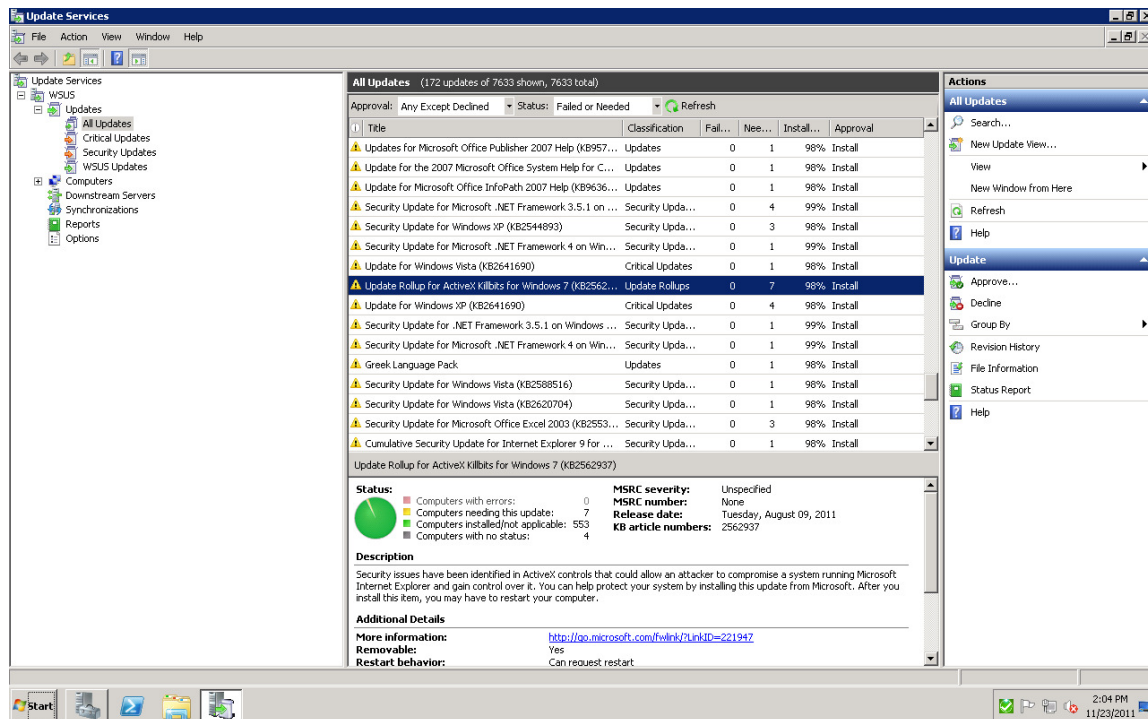
Remote Connection Information



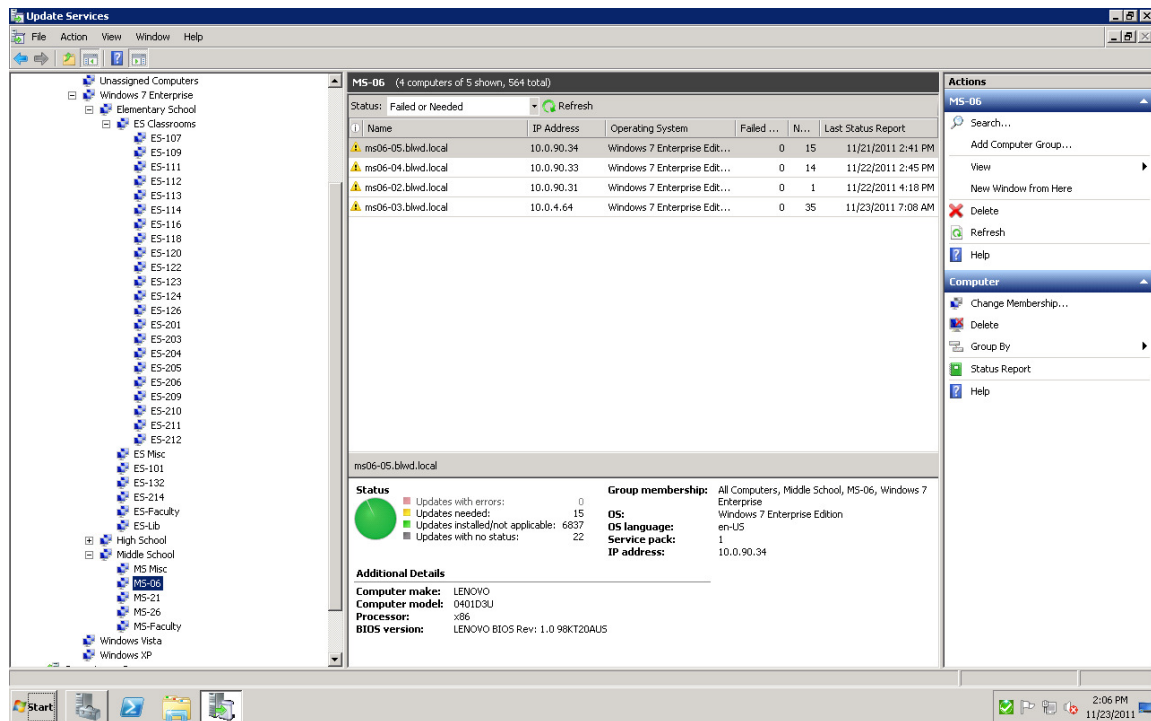
Login Screen



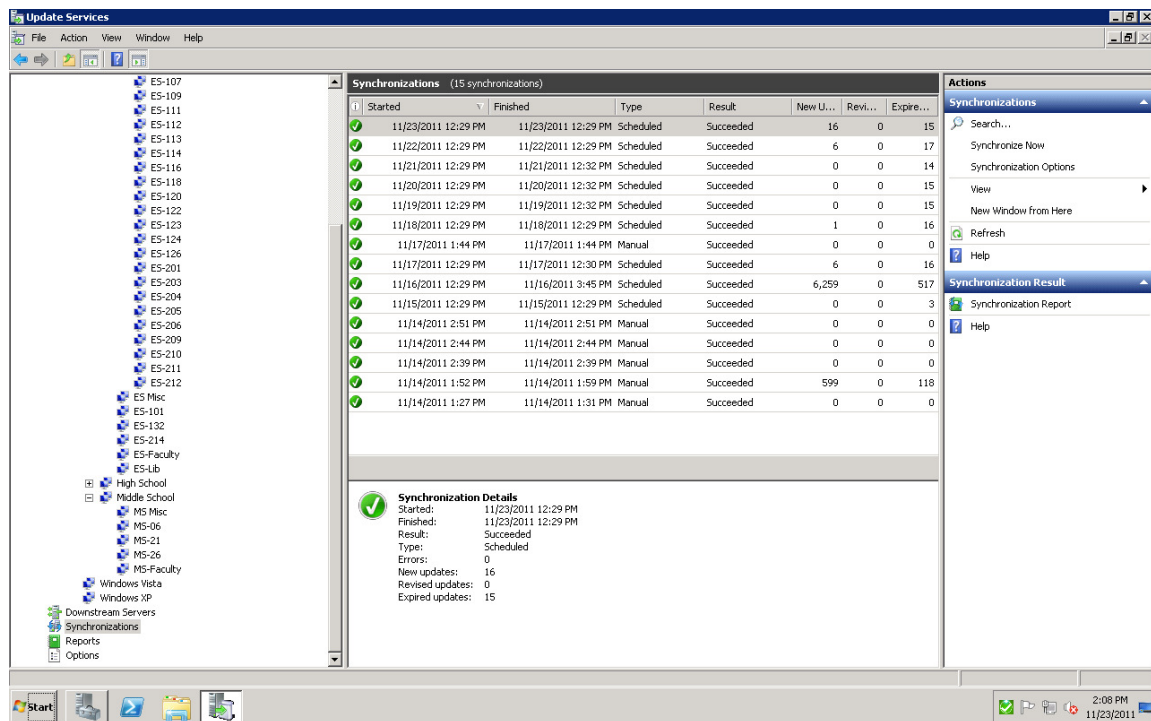
WSUS Server Manager



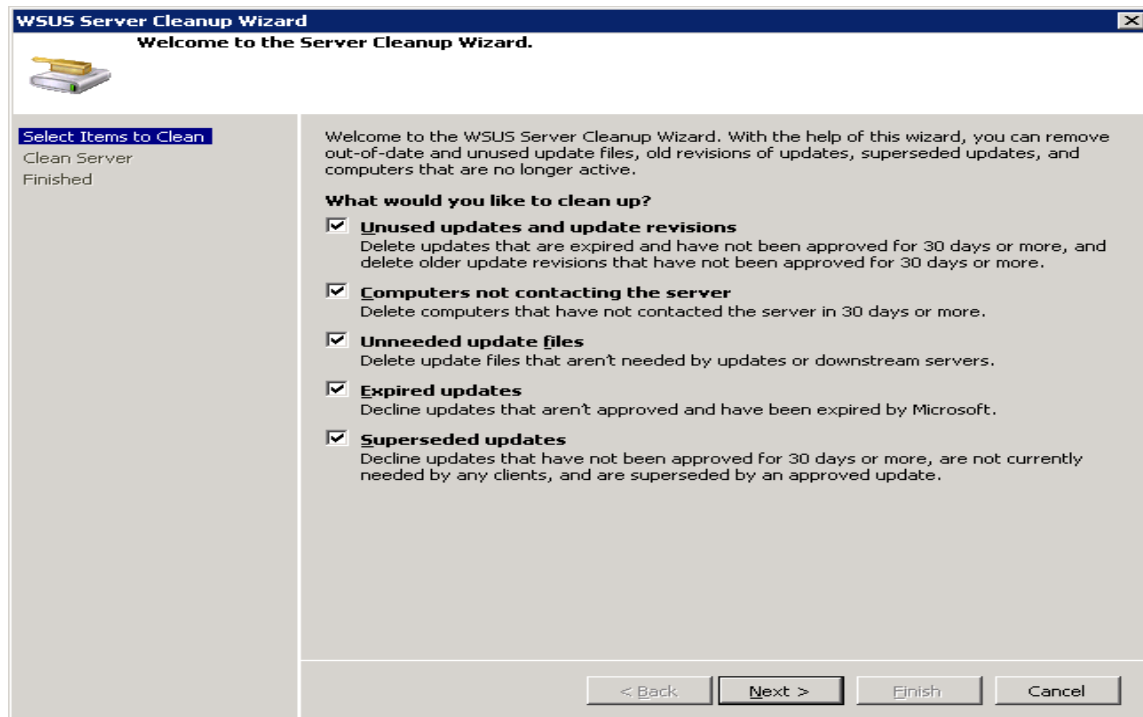
Server Updates Needed/Failed/Declined



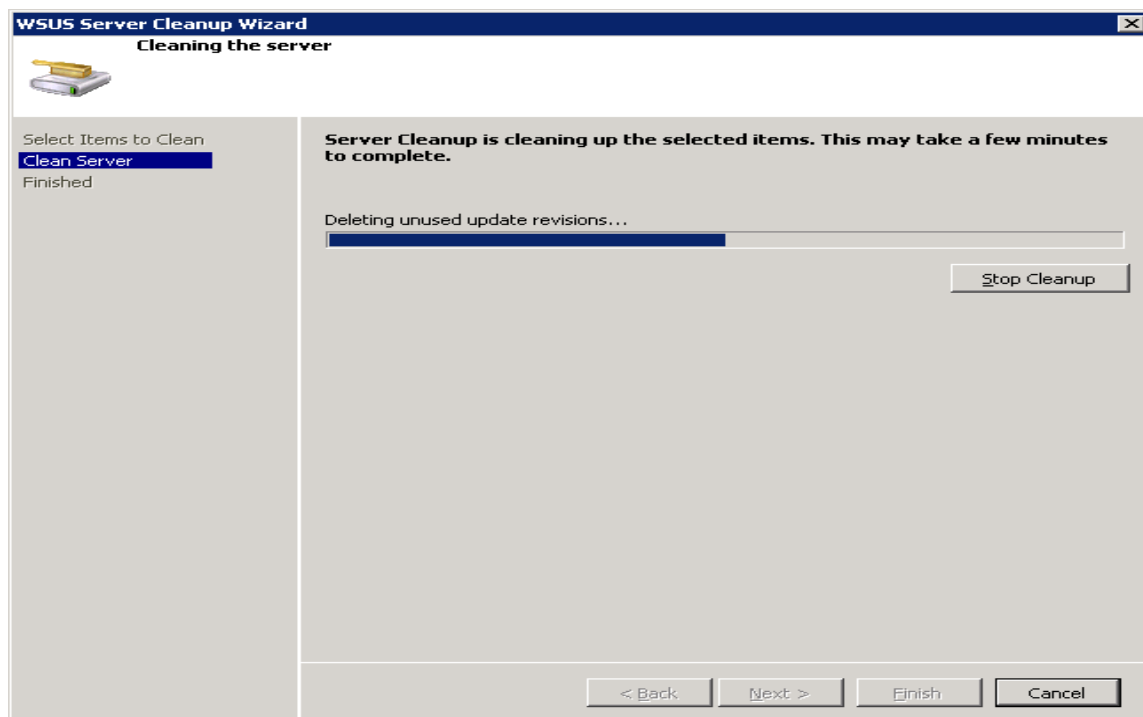
Inspecting computers at classroom level detail



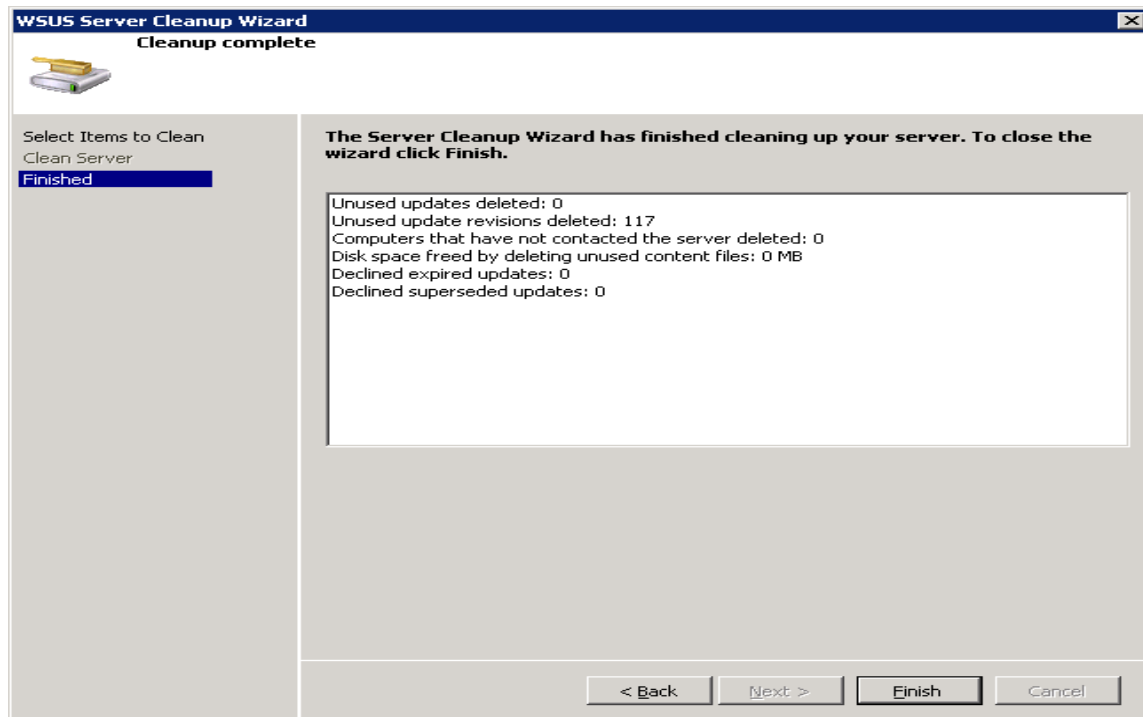
Verifying that the update server is syncing updates



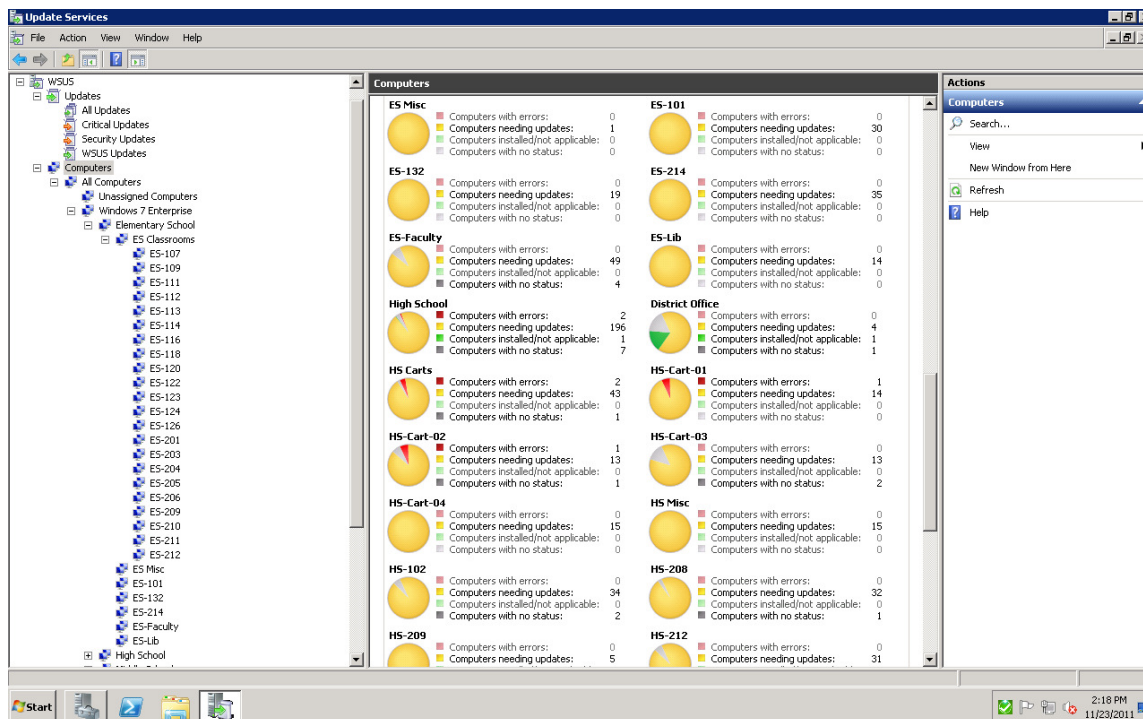
Utilizing the Cleanup Wizard



Deleting unused updates



Viewing cleanup results



Surveying "health" of the network after computer updates